

Berechnung der Wohnfläche

Erdgeschoß

Wohnzimmer

4,12 x 6,61 x 0,97 = 26,41 qm

Esszimmer

4,00 x 3,85 x 0,97 = 14,94 qm

Küche

3,35 x 3,85 x 0,97 = 12,51 qm

Treppenhaus

1,70 x 3,40 x 0,97 = 5,61 qm

Vorflur

1,59 x 2,23 x 0,97 = 3,44 qm

Garderobe

1,30 x 1,56 x 0,97 = 1,97 qm

WC

1,30 x 1,30 x 0,97 = 1,64 qm

Dachgeschoß

Elternschlafzimmer

(4,12 x 4,80 - 1,29 x 1,20/2) 0,97 = 18,44 qm

Badezimmer

(3,00 x 2,97 - 1,68 x 1,20/2) 0,97 = 7,66 qm

Kinderzimmer

(3,25 x 4,45 - 1,06 x 1,20/2) 0,97 = 13,41 qm

Kinderzimmer

(3,94 x 3,85 - 1,76 x 1,20/2) 0,97 = 13,69 qm

Abstellraum

1,60 x 1,23 x 0,97 = 1,91 qm

Treppenhaus und Flur

(1,60 x 3,40 + 0,94 x 1,70 +
1,71 x 1,23) 0,97 = 8,87 qm

130,50 qm

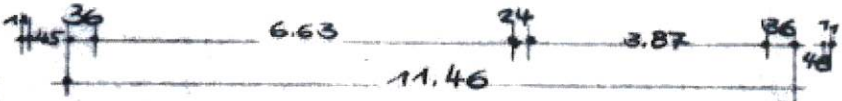
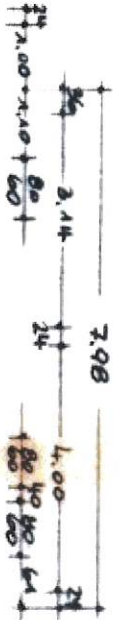
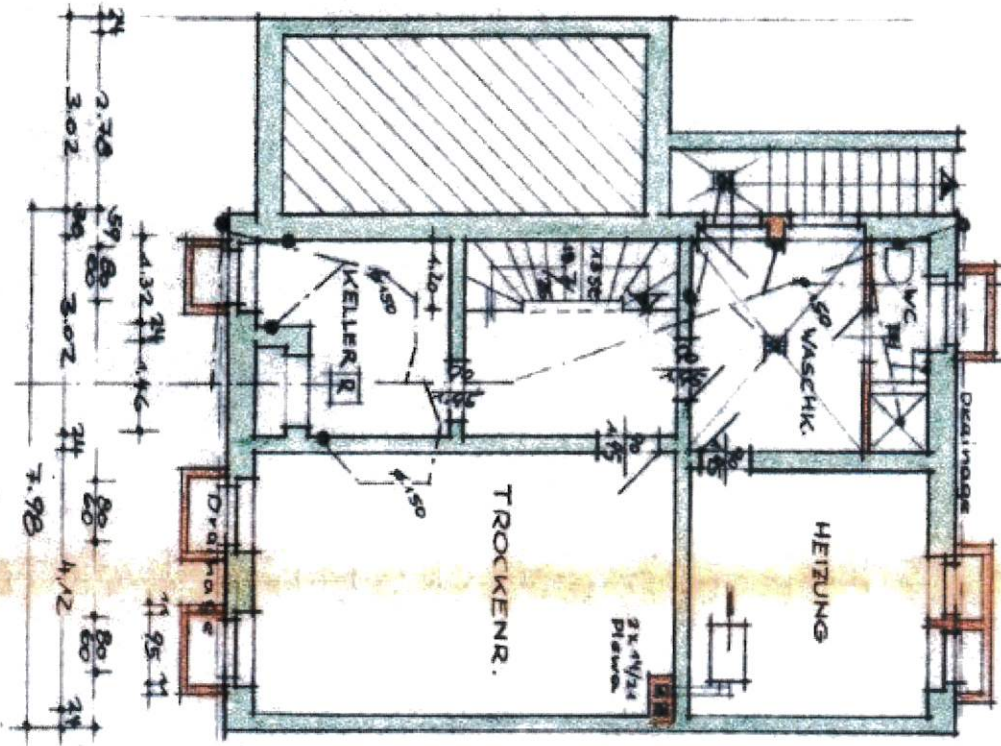
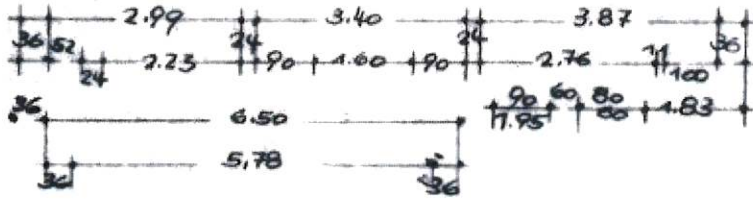
130,00 qm

Eschweiler, den 28.11.1978

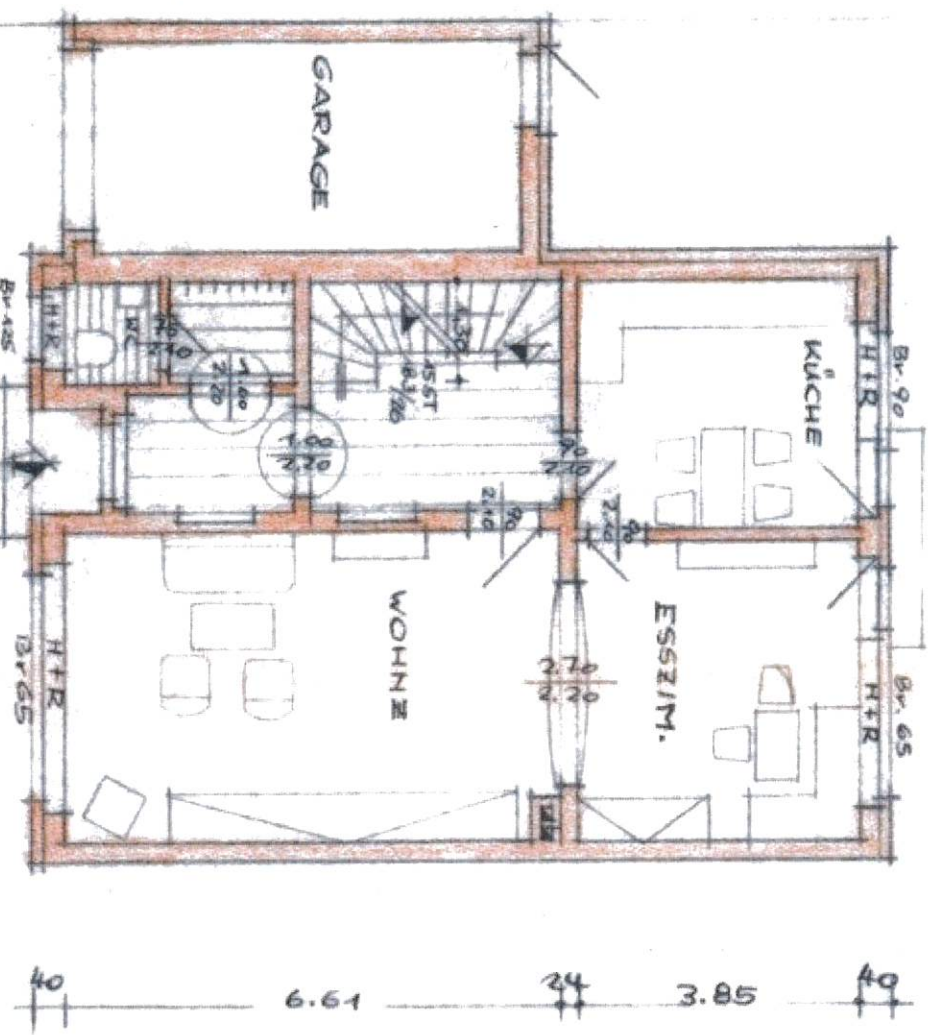
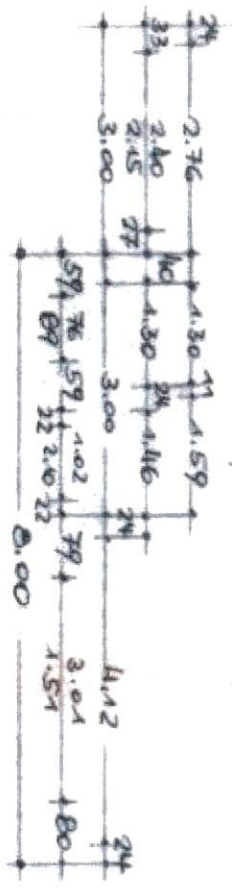
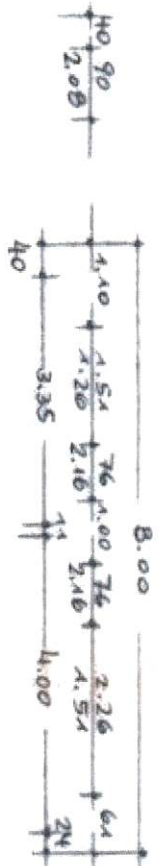
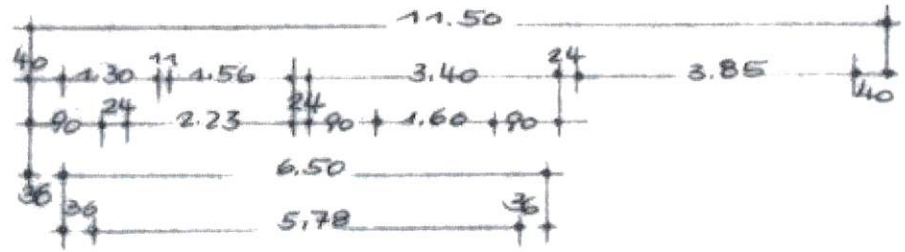
Der Architekt:



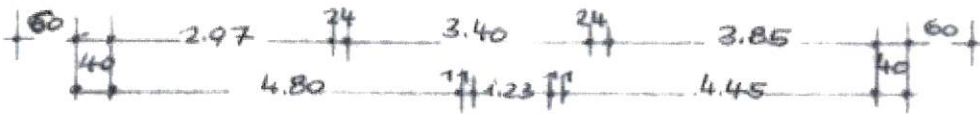
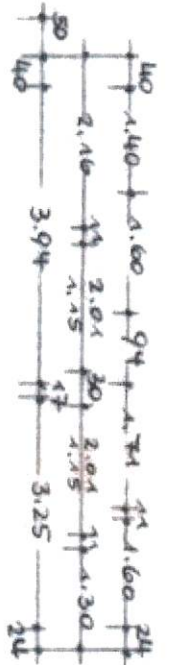
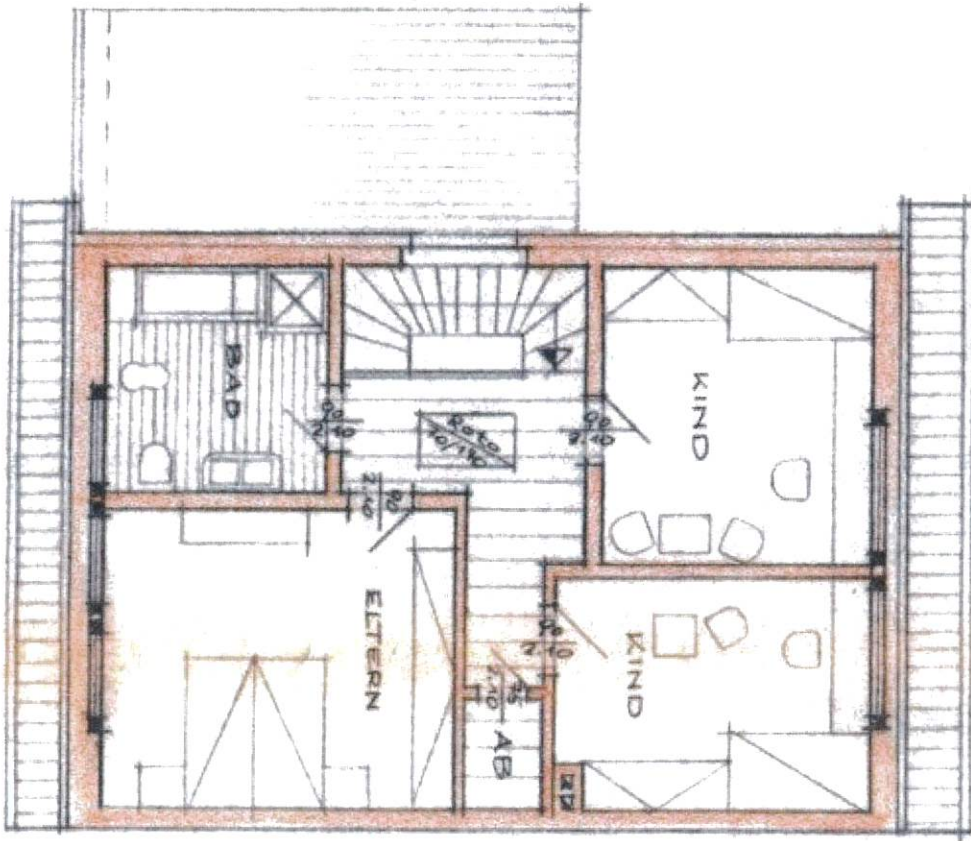
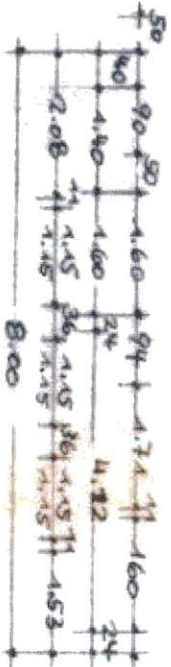
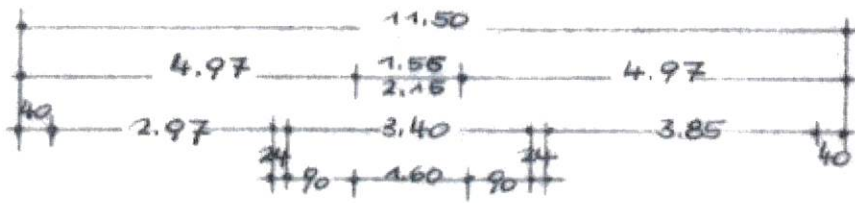
ca. 270m² Grundstück



KELLER



ERDGE.



DACHGE